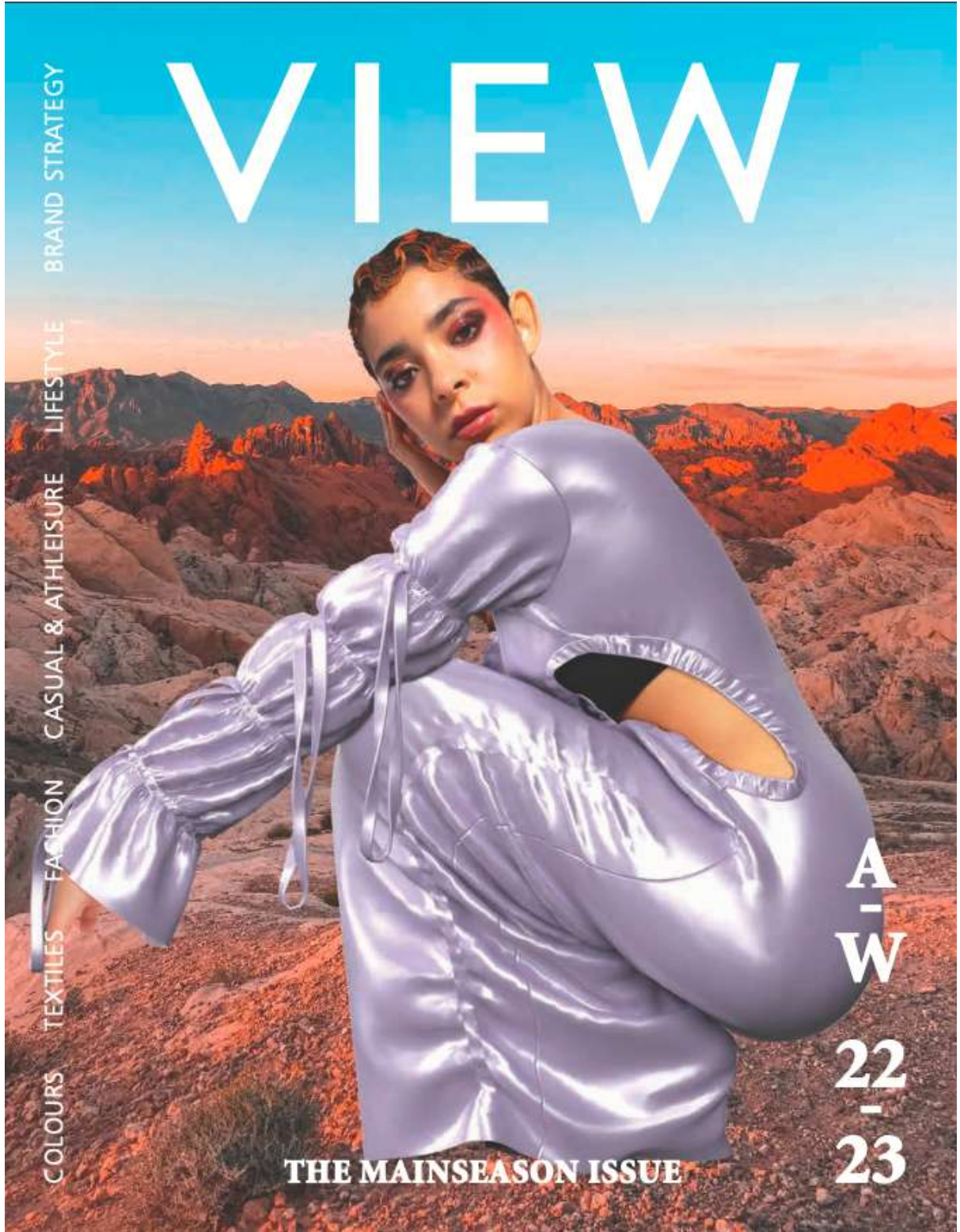


ALESSANDRA PRAUDI
BESPOKE PRESS RELATIONS



VIEW

BRAND STRATEGY

LIFESTYLE

CASUAL & ATHLEISURE

FASHION

TEXTILES

COLOURS

A
-
W

22
-
23

THE MAINSEASON ISSUE

2. Fine wools

Animal welfare is of growing concern among consumers who are expressing clear demands for better practices. Italian spinners of high-quality wool, cashmere or mohair are well aware of these new demands and are taking measures to guarantee the provenance of their luxurious raw materials. Textile Exchange has just released the first version of a Responsible Alpaca Standard, adding a new label to the many programmes seeking to promote best practices, but designed specifically for camelids' unique high-altitude environment.

BORN IN THE ANDES

A capsule collection of hand-woven fabrics made from 100% super fine alpaca comes to Europe directly from the Andes thanks to a creative and ethical collaborative effort. It includes Italian NGO Progettomondo that has been working with breeders in Bolivia and Peru for the past 50 years to promote local production, especially by women, and traditional textile art, along with a programme to support small farmers, "Tejendo Solidaridad", Italian spinner Piacenza Cashmere and sustainable textile platform C.L.A.S.S. "It is a truly holistic project that seeks to sustain the best conditions for all, humans, animals and nature," said C.L.A.S.S. founder Giusy Bettoni at the virtual launch of the range. At event, Textile Exchange presented its new Responsible Alpaca Standard, which it says has been adopted by 80% of Peruvian breeders.



BORN IN THE ANDES

BOTTO GIUSEPPE FOCUSES ON ETHICAL SOURCING

Botto Giuseppe's Slowool yarns pair a measure of high performance, thanks to a special spinning technique that preserves the long fibres' innate elasticity and finesse, with a high sense of ethics. The Biella-based company sources its raw materials from Australian growers that are certified Responsible Wool Standard. The spinner applies similarly ethical principles to its Flair Cashmere yarns that carry Good Cashmere Standard (GCS). Both of these product ranges are



BOTTO GIUSEPPE

certified Cradle-to-Cradle. "To create products of excellence, the secret is to collaborate with partners who share the same philosophy in favour of sustainable practices throughout the supply chain," the company says.

LANIFICIO DELL'OLIVO'S SUSTAINABLE NATURE

The presence of wool and silk are up in Lanificio dell'Olivo's A/W 22/23 collection. These are paired with alpaca and mohair but also blended together in a new family of yarns offering the softness of a wool core with the brilliance of silk. The Tuscan spinner is increasingly using raw materials that have ethical and sustainable origins, having obtained more than a dozen certifications for its organic cotton, wool, mohair, alpaca, viscose and recycled synthetic fibres. Its production, entirely Made in Italy, is also essential to its ecological profile.



LANIFICIO DELL'OLIVO

ALESSANDRA PRAUDI
BESPOKE PRESS RELATIONS

VIEW 107



A calming and peaceful atmosphere. Minimalist but not without textural interest. Monochromes with greys and white in the lead but also soft blues, navy and taupes. Super plains and luxury jerseys yes, but note the architectural plissés, graphic prints and mini geometric patterns complemented by mouliné effects and scratched textures.

7, 8. TIBSES (I) 1: 100% VIRGIN WO; 8: 100% CO GOTS 2. TOLLEGNO 1800 (I) 100%WS 3, 9. MARIOBOSELLI (I) 3: 100%CO; 9: 44%WR, 56%WV 4. LINEAESSE (I) 100%PL, 100%PL 5. BOTTO GIUSEPPE (I) 88%WV, 2%EA 6. GRUPPO DONDI (I) 100%WV 7 HENRY BERTRAND (GB) 85%PL, 15%SE 10. NOVA FIDES (I) 42%WO, 25%WK, 17%PA, 16%CO 11. PONTETORTO (I) 80%WV, 20%PA 12. ASSOTEX (I) 44%WV, 15%PA, 14%WR, 14%WM, 13%PC 13. COLOMBO (I) 69%AC, 29%CO, 2%EA 14. TESS. LA COLOMBINA (I) 80%WO, 20%ALPACA 15. TESSLIDEA (I) 70%AC, 30%PL 16. TESEO (I) 71%WO, 19%PA 17. GRUPPO DONDI (I) 18. PRODUCE SINAPSI (I) 80%WV, 20%WS 19. MOESSMER (I) 20. BESANI (I)

ALESSANDRA PRAUDI
BESPOKE PRESS RELATIONS

VIEW 109



ALESSANDRA PRAUDI
BESPOKE PRESS RELATIONS

Tender | Knits



Calm, indulgent, comfortable, muted. An intimate connection between humans and nature, expressing moderation, balance, tactility, softness and warmth.

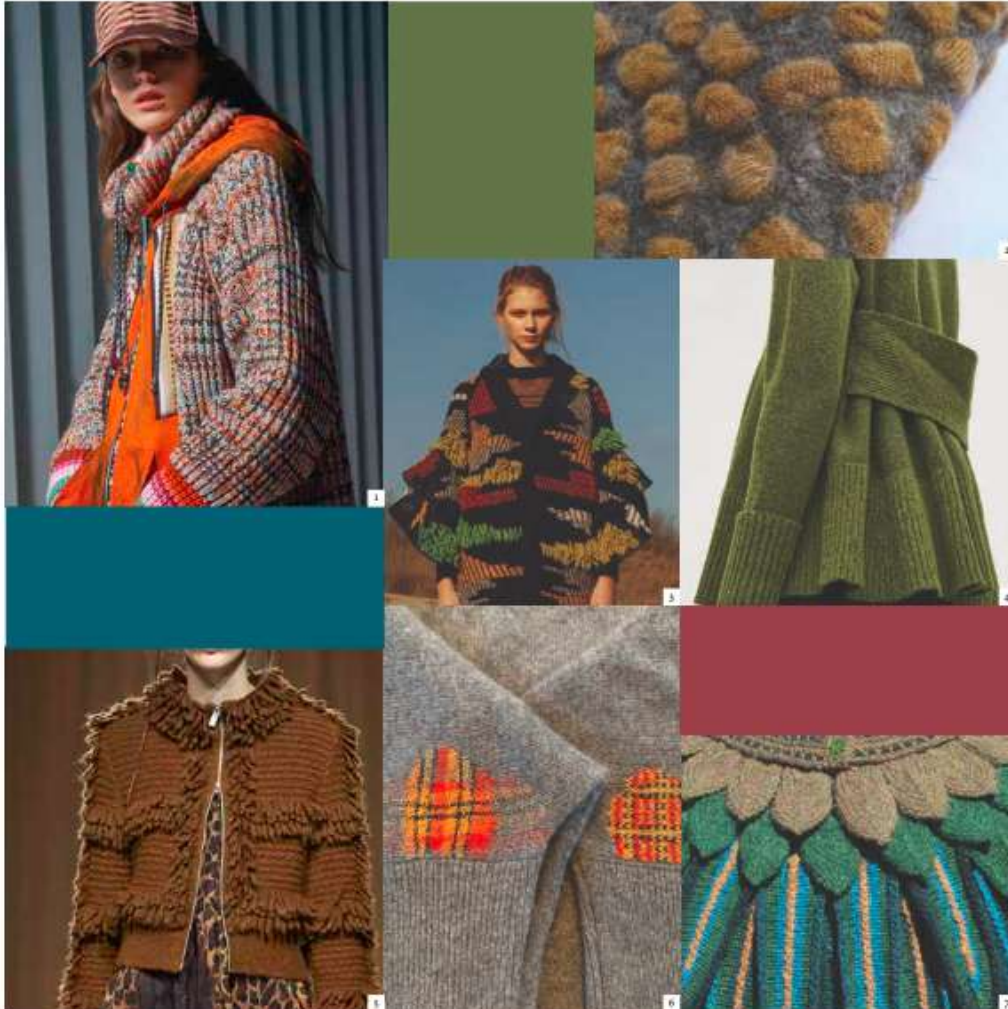
Lightweight, fine merino wool yarns, smooth, airy superkid mohair and warm baby alpaca blends. Smooth cashmere in fine counts; the precious delicacy of cashmere and silk blends; durable blends of wool with cotton/organic cotton; recycled/regenerated cashmere yarns; and gentle iridescent effects.

LEFT: 1. KEPLER LONDON 2. CECILIE BAHNSEN 3. ALTUZARRA 4. CUCINELLI 5. AURALEE 6. CAMILLA AND MARC 7. CUCINELLI RIGHT: 1. TOLLEGNO 1900 - 100% XF MERINO WOOL 2. CARIAGGI LANIFICIO - 71% WS-19% SE-10% PL 3. BOTTO GIUSEPPE - 100% SUPERFINE MERINO WOOL 130'S 4. ZEGNA BARUFFA - 100% WV EXTRAFINE MERINO WOOL-70% WV+30% PA 5. LANIFICIO DELL'OLIVO - 80% VI-20% METALLIC FIBRE 6. FILITALY-LAB - 78% BABY SURI ALPACA-8% FINE MERINO WOOL-14% PA 7. COFIL - 43% SUPERKID MOHAIR 17% WOOL-40% PA 8. COFIL - 62% SUPERKID MOHAIR 28% WD-12% PA 9. CARIAGGI LANIFICIO - 71% WS-19% SE-10% PL 10. FILMAR - 100% MERCERISED COTTON 11. LANIFICIO DELL'OLIVO - 83% PA- 17% EA 12. IAFIL - 100% ULTRAFINE COTTON+54% BIO WOOL-49% ORGANIC PIMA COTTON+100% SUPIMA COTTON 13. MONTICOLOR - 70% COMBED COTTON-25% PA-5% EA 14. LANIFICIO DELL'OLIVO - 47% VI-53% PL+35% SUPER KID MOHAIR-35% BABY ALPACA-30% POLYAMIDE 15. LANIFICIO DELL'OLIVO - 83% MAKÒ COTTON- 19% METALLIC FIBRE-18% PA

ALESSANDRA PRAUDI

BESPOKE PRESS RELATIONS

From the earth | Knits



Spontaneous, crafted, hybrid. Sensitive natural shades enhanced by warm brown tones and neutral greens. Timeless reassuring colours expressing roughness combined with authenticity.

Combed wool alpaca blends to be knitted in compact textures. Carded wools to be felted and boiled for extreme protection. Irregular rovings, bulky slubbed effects and voluminous loop yarns imitating furs. Melange and marled effects, mouliné. Recycled polyester and wool, organic cotton and undyed alpaca are often used in blends.

LEFT: 1. MISSIONI 2. HETTIE JOHNS CSM TEXTILE DESIGN 3. ANA MARIA RICOV 4. COS 5. MARC GAIN 6. FLORA COLLINGWOOD NORRIS 7. ALICE STARMORE
RIGHT: 1. OLIMPIAS - 80% WO-20% PA 2. LANIFICIO DELL'OLIVO - 35% MERINO WOOL-15% VI-50% PC + 20% WM-20% WO-15% VI - 22% PA - 23% PC 3. FILMAR - 80% CO-20% SE 4. COTONIFICIO DLCESE - 32% CO-10% SE-47% COMBED WOOL-9% VI-8% PL 5. PAPI FABIO - 100% ULTRAFINE MERINO WOOL 6. MANIFATTURA SESIA - 50% ALPACA-50% BIO WOOL 7. DOFIL - 73% MERINO WOOL-27% PA 8. PECCI FILATI - 22% SUPERFINE ALPACA-14% MERINO WOOL-64% CO 9. MANIFATTURA SESIA - 100% WO 10. BOTTO GIUSEPPE - 70% XF MERINO WOOL-30% PA 11. FILITALY-LAB - 75% SUPERFINE ALPACA-13% MERINO WOOL-12% PA 12. CARIAGGI LANIFICIO - 80% WO-20% WS 13. PINORI FILATI - 9% WP-15% WO-72% PC-3% PL-1% PA 14. TOLLEGNO-1900 - MERINO WOOL FELTED

ALESSANDRA PRAUDI
BESPOKE PRESS RELATIONS

VIEW 121



ALESSANDRA PRAUDI
BESPOKE PRESS RELATIONS

VIEW 131



Re-examining the eco-sphere. A feeling for the ephemeral, the transient and transparent. Science meets fashion in a series of super blues, transparent whites, aqua and ultramarine. Transparents and sheers often layered together, see-through plissés, ruching and wave effects, watery prints and ripple effects, fluid jerseys, liquid finishes, embossing, pearl and coral inspired embroideries.

1. INSETA (I) 100%CO 2. 6. BARDAZZI (I) 2: 65%AG, 35%PA; 6: 84%PL, 8%EA 3, 7. BONOTTO (I) 3: 84%VV, 6%PA; 7: 100%PL; 4. TESS. LA COLOMBINA (I) 68%PA, 30%WM, 2%PL
5. ECOSENSOR™ BY ASahi KASEI (I) 8, 20. BESANI (I) 9, 15. BONOTTO (I) 9: 88%MI F&C, 7%CO, 5%ME; 15: 65%PL RECYCLED, 35%PL 10, 22. ERICA (I) 10: 87%PA, 13%EA;
22: 97%PL, 3%EA 11. HENRY BERTRAND (GB) 85%PL, 17%SE, 14%PM 12, 21. ANTICA VALSERCHIO (I) 13. BOTTO GIUSEPPE (I) 98%VV, 4%EA 14. CANEPA (I) 47%PL, 27%PA,
26%SE 16. LUXURY JERSEY (I) 100%PA 17. TESSILIDEA (I) 100%PL 18. BRUGNOLI (I) 19. FASAC (I) 68%PL, 34%PLME 23. TOLLEGNO 1900 (I) 100%WS

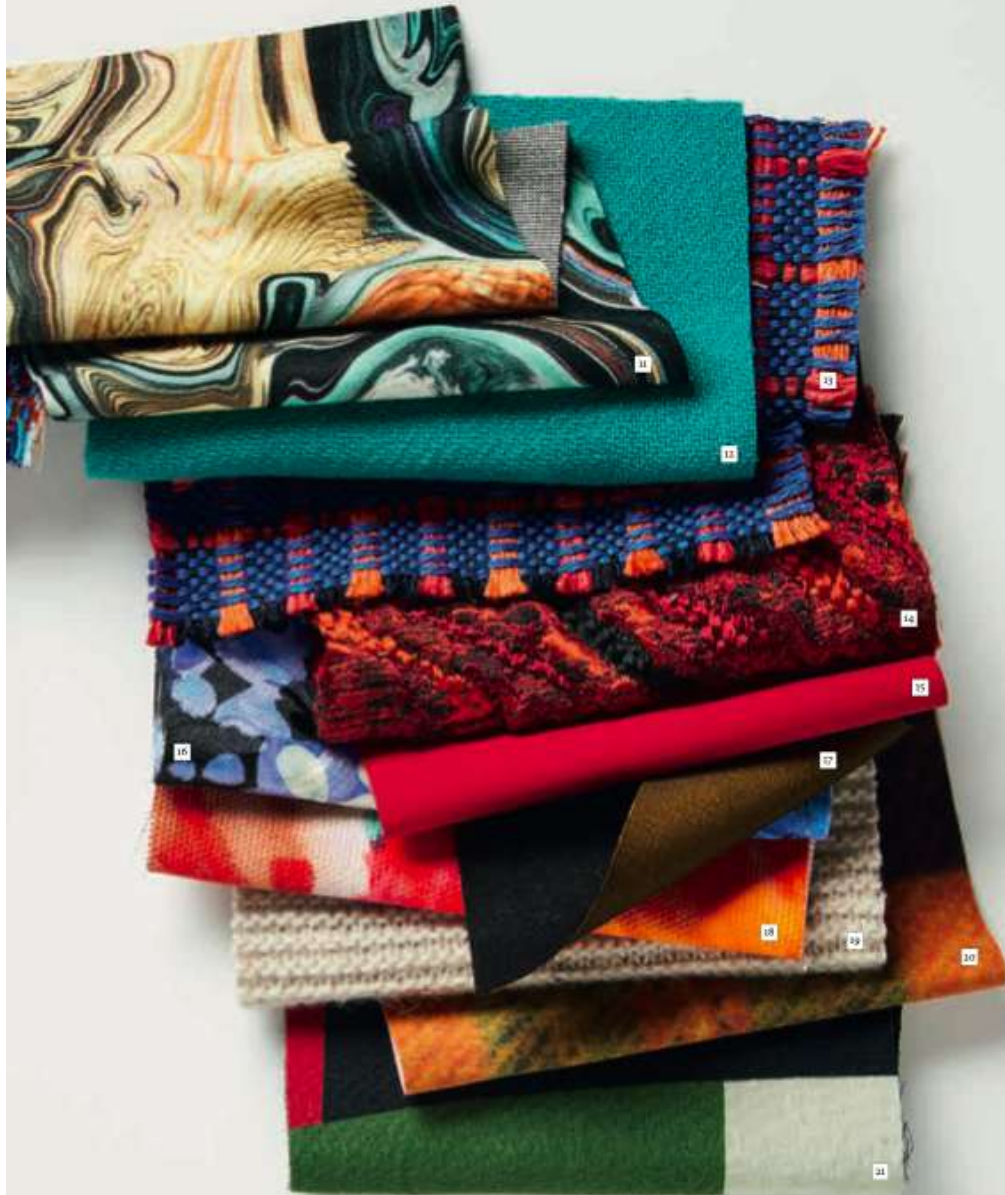
ALESSANDRA PRAUDI
BESPOKE PRESS RELATIONS

Making a mark | Fabrics



ALESSANDRA PRAUDI
BESPOKE PRESS RELATIONS

VIEW 143



Making a statement with colour and pattern. Playful, optimistic and spontaneous. Power prints, strong plains, fancy braids and embroideries, multi-coloured stripes and checks, naïf floral bouquets, artisanal and handcrafted weaves. A full of life palette featuring the warmest of yellows, marigold orange, paradise pinks and nostalgic pastels all set against white.

1. ANTICA VALSERCHIO (I) 2. BOTTO GIUSEPPE (I) 100%WV 3. GIOLICA (I) 4. MOESSMER (I) 48%WV, 24%WP, 16%PA, 14%WY 5. MANTERO (I) PL/WO 6. RATTI (I) 7, 8, 12. NOVA FIDES (I) 7, 12: 75%WV, 25%PA; 9: 56%WV, 26%PA, 18%WM 8, 16. CANEPA (I) 8: 49%SE, 41%PL, 14%PA; 18: 100%SE 10, 13. TESS. LA COLOMBINA (I) 10: 100%WO MERINO; 13: 52%CO, 27%SE, 21%LI 11. ERICA (I) 83%VI, 13%PL, 4%EA 14, 21. PROPOSTE (I) 14: 89%PL, 6%SE, 5%PA; 21: 35%VI, 31%PC, 22%PL, 6%WO, 5%PA 15. TOLLEGNO 1900 (I) 98%WV, 4%EA 17. ASSOTEX (I) 72%WV, 28%PA 18. FASAC (I) 100%CO 19. BARDAZZI (I) 45%WO, 30%PC, 25%WP 20. SENSITIVE FABRICS BY EURJERSEY (I)

ALESSANDRA PRAUDI
BESPOKE PRESS RELATIONS



ALESSANDRA PRAUDI
BESPOKE PRESS RELATIONS



1. BOTTO GIUSEPPE (I) 98%WV, 2%EA 2. MOESSMER (I) 100%WV 3. ESTETHIA/G.B. CONTE BY ITALTEX (I) 100%WV
4. GRUPPO DONDÌ (I) 85%WV, 15%PA 5. TISSÉS (I) 6. BOTTOLI BY ITALTEX (I) 7. MARZOTTO BY ITALTEX (I) 8. BARDAZZI (I) 98%PA, 2%EA
9. BONOTTO (I) 100% CO GOTS 10. NOVA FIDES (I) 80%WV, 20%PA 11. BONOTTO (I) 40%CO BCI, 35%WV, 25%PA 12. ANGELICO (I) 100%WV

ALESSANDRA PRAUDI
BESPOKE PRESS RELATIONS



1. SENSITIVE® FABRICS BY EUROJERSEY (|) 2, 9. TOLLEGNO 1900 (|) 2: 98%WV, 4%EA; 9: 100%WK
3. OSPITI DEL MONDO (|) 100%LI 4, 5, 12. NOVA FIDES (|) 4: 47%CO, 28%PC, 18%WO, 5%AF, 2%PL; 5: 75%WV, 25%PA;
12: 59%CO, 22%PC, 8%AF, 6%WO, 5%PL 6. BOTTO GIUSEPPE (|) 100%WV 7, 8. BARDAZZI (|) 7: 41%PA, 40%VL, 14%PL, 5%EA;
8: VI, PA, EA 10. BONOTTO (|) 100%CO BCI 11. ESTETHA/GLB. CONTE BY ITALTEX (|) 100%WV