

COLLEZIONI TRENDS

#fashion #textile #design #lifestyle



€ 32,00 (I) / € 47,00 (D) (B) / € 45,00 (E) / € 51,00 (F) (P) / € 55,00 (N) (L) / € 43 (U) (K) / CHF 70,00 (CH) - Trim. January 2019 - ISSN 1124-2957 - Prima Immersione, 21 settembre 2018

African Dreams

**SPECIAL
LEATHER & SYNTHETIC**

Ways of Life

**PREVIEW
SPRING/SUMMER 2020**

**YARN & STITCHES
Fabrics & Accessories**

**THE BEST
RUNWAY LOOKS**

Go Green!

www.collezioni.iafo



- BOTTO GIUSEPPE

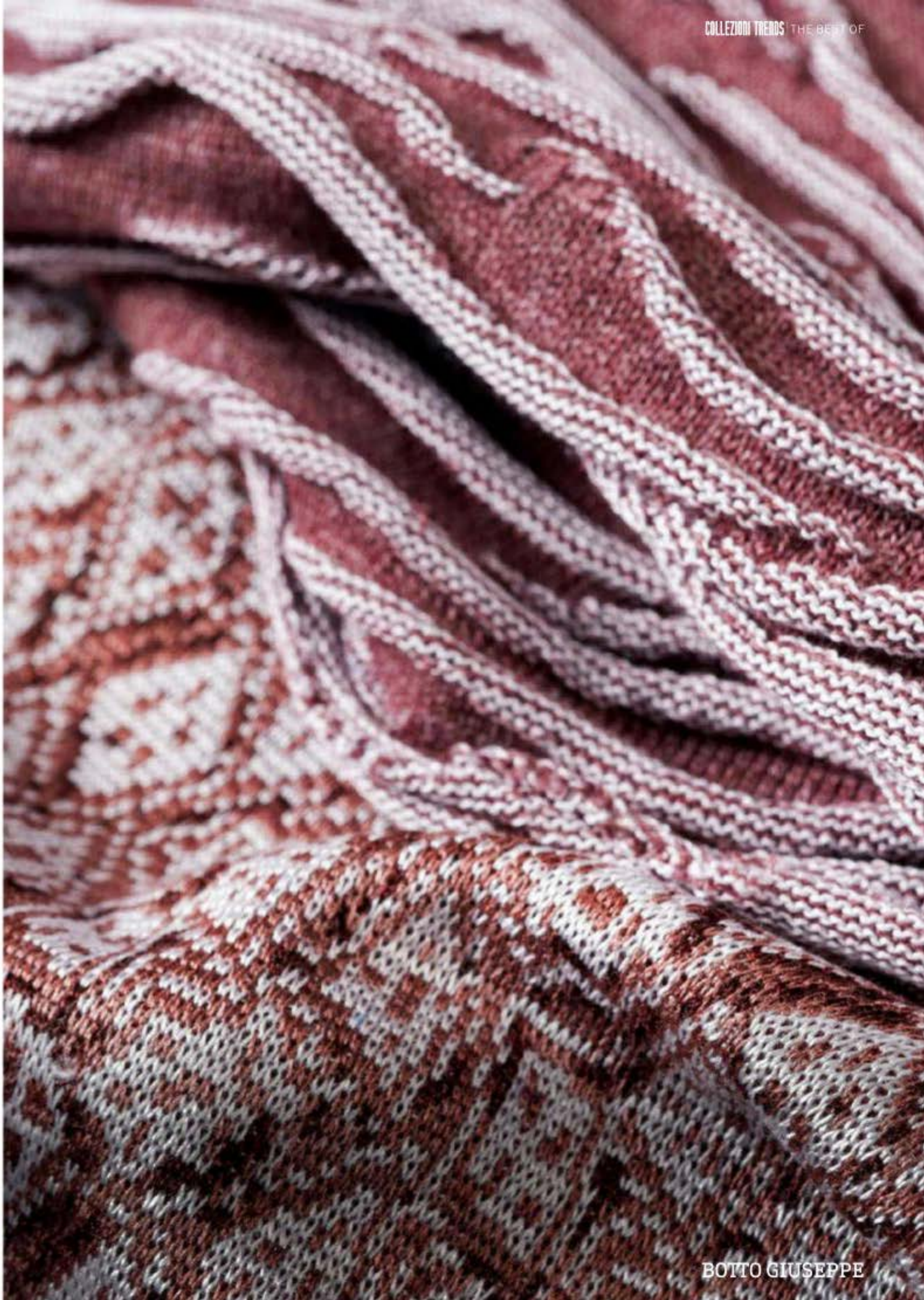
Presents its Spring/Summer 2020 collection

“ www.bottogiuseppe.com „

Botto Giuseppe presents its Spring/Summer 2020 collection and focuses on sustainable fashion, aiming to establish a harmonious relationship with the environment and people, in an absolutely transparent manner. Naturalis Fibra is a new collection of yarns and fabrics obtained from a selection of natural materials using a production process that employs totally renewable energy, with careful attention given to treatments and dyes that are eco-friendly. As far as shades are concerned, there is a transition to fresher, futuristic, sometimes even plastic nuances. Roses are transformed into pastels, yellows are more defined. Green, bright and crisp, will be the essential color for the season, while high-end yarns are designed for luxury clients and the most important markets worldwide like USA, China, Korea, Japan, and Germany.

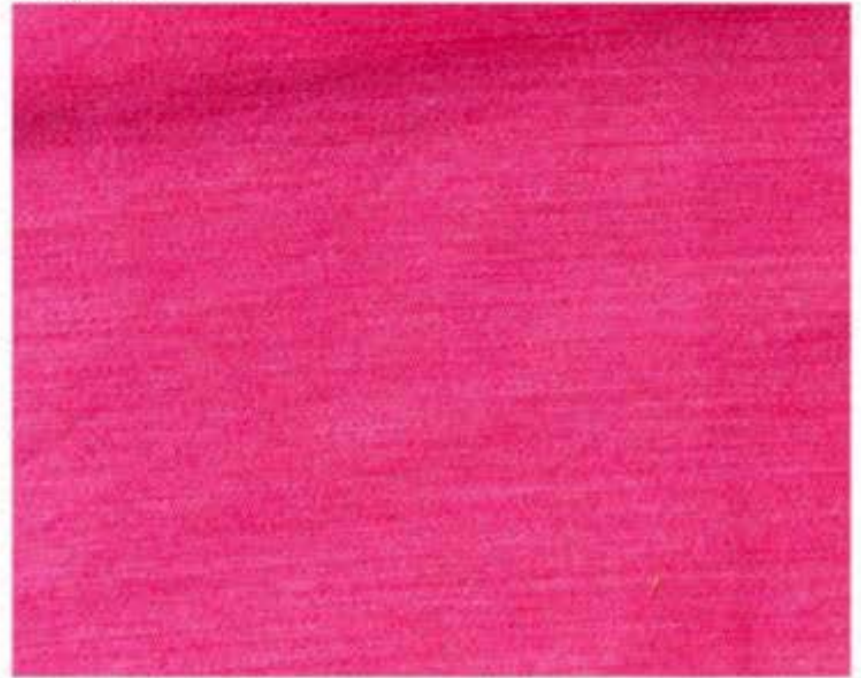
Botto Giuseppe presenta la sua collezione Primavera /Estate 2020 puntando su una moda sostenibile, con l'obiettivo di instaurare un rapporto armonioso con l'ambiente e con le persone, in un sistema di assoluta trasparenza. Naturalis Fibra è una nuova collezione di filati e tessuti, ottenuti dalla selezione di materiali naturali, attraverso una produzione che utilizza energie totalmente rinnovabili, e con attenzione ai trattamenti e ai coloranti per un basso impatto ambientale. Per quanto riguarda le tonalità si registra un passaggio a sfumature più fresche, futuristiche, a volte anche plastiche. I rosa si trasformano in pastelli, i gialli sono più definiti, il verde, brillante, pulito, sarà il colore chiave per la stagione. Filati di alta gamma, pensati per clienti di lusso, e per i mercati più importanti quali Italia, Usa, Cina, Corea, Giappone e Germania.



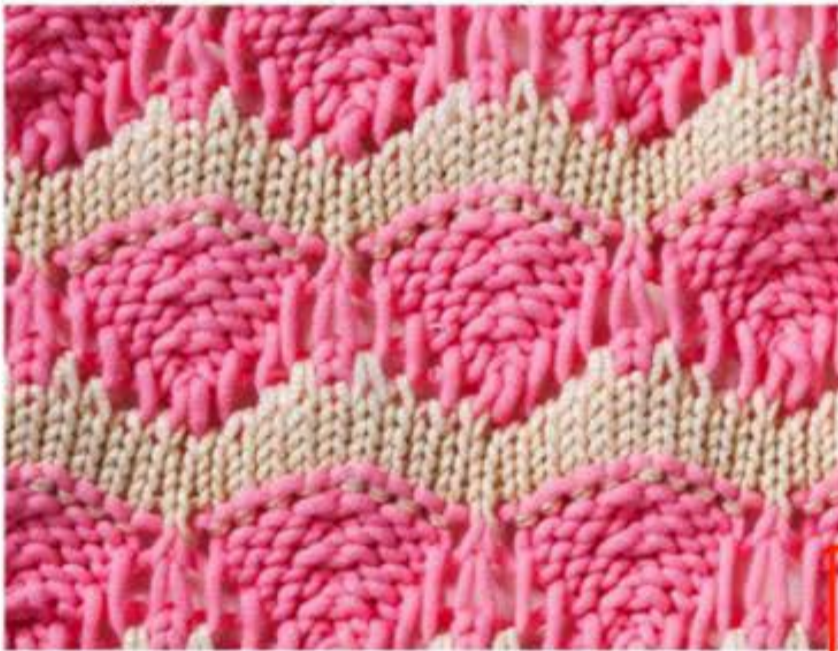


Eclectic Notes

Ongetta



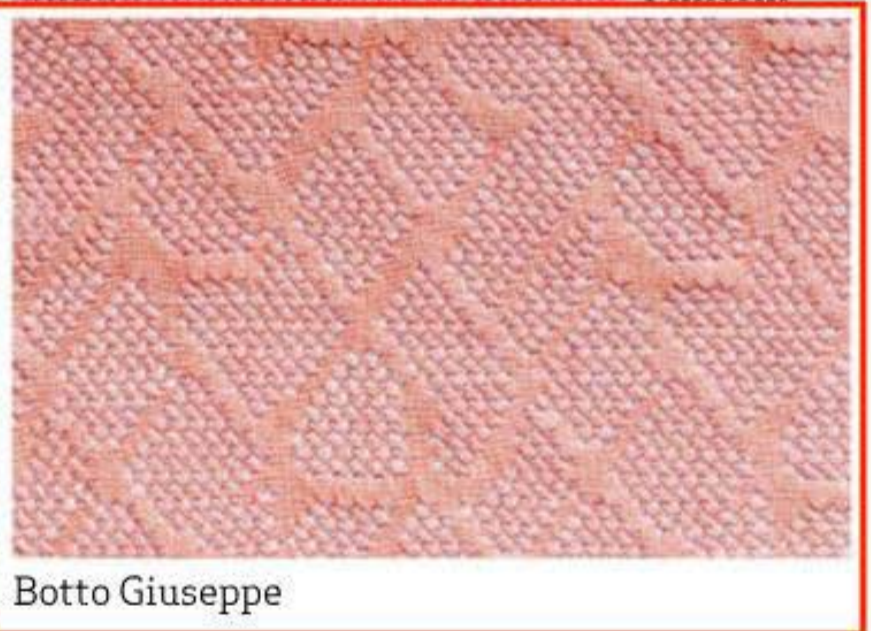
E. Miroglio



Millefili

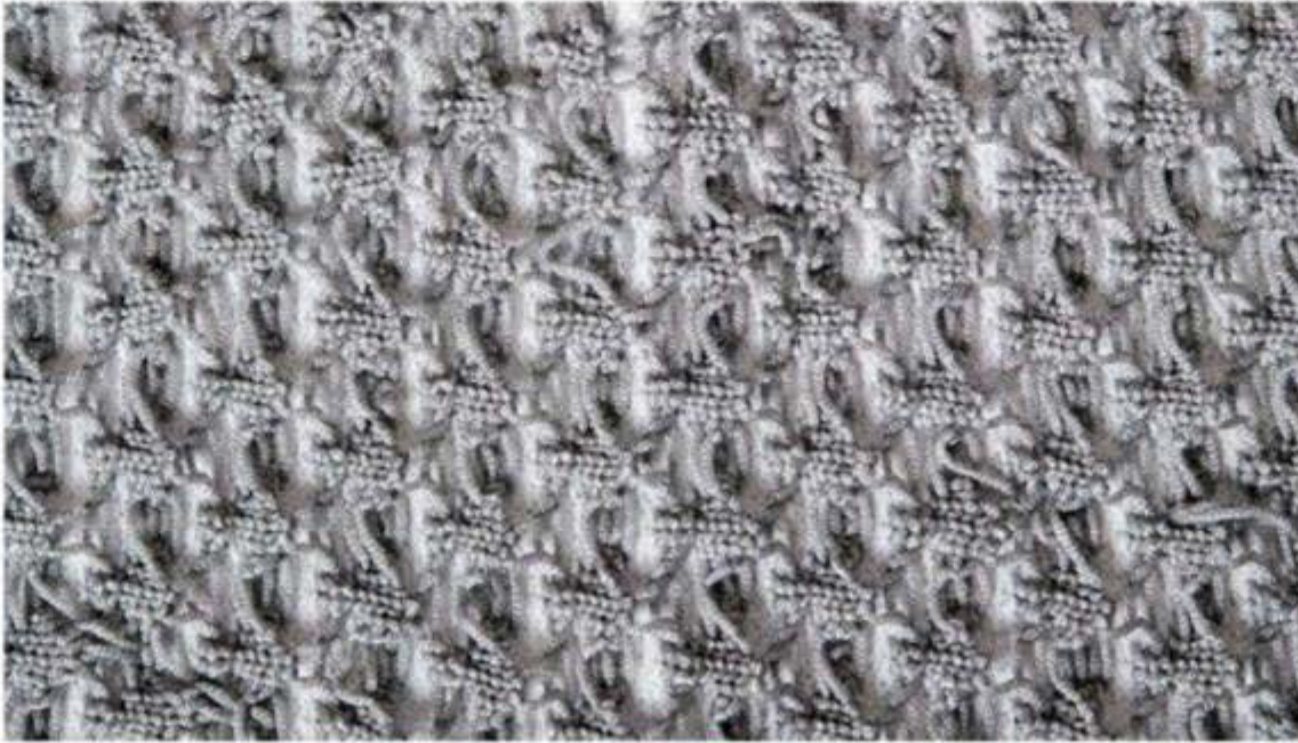


Biella Yarn



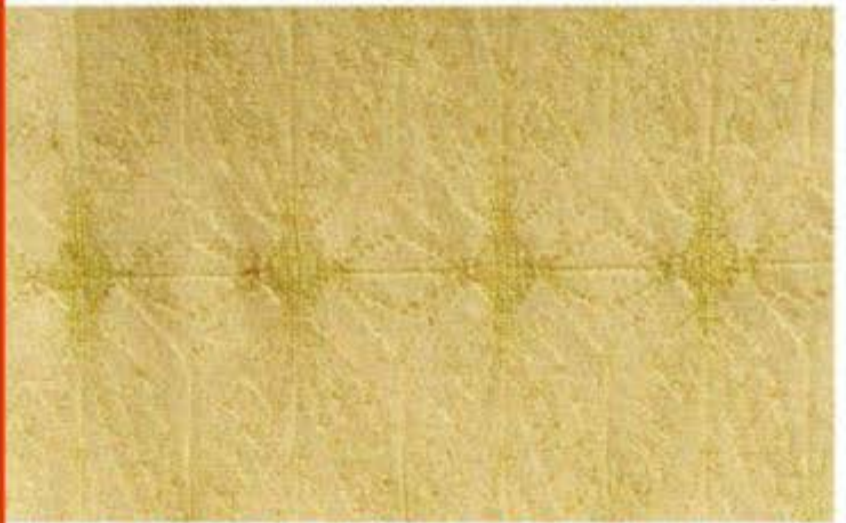
Botto Giuseppe

Filpucci



PREVIEW

Polipeli



Botto Giuseppe



Biella Yarn



Cariaggi

PREVIEW



Lanificio dell'Olivo



©photosforyou



Cariaggi



Botto Giuseppe