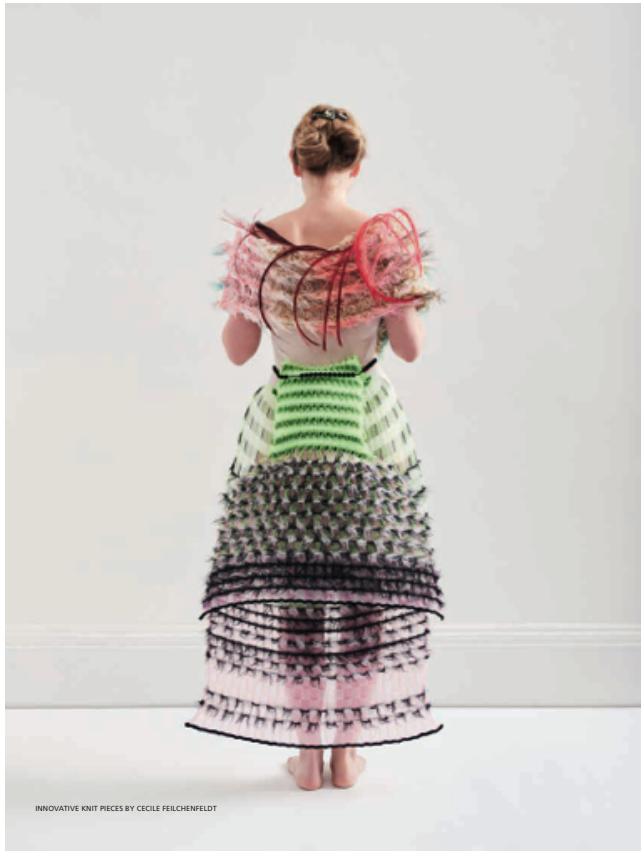


Alessandra Praudi Bespoke Press Relations

VIEW N. 124 November 2018



INNOVATIVE KNIT PIECES BY CECILE FEILCHENFELDT

TEXTILE VIEW N° 124

WOMENSWEAR **KNITS AND YARNS** 5/5 2020 155

Knits and yarns

A lightness and buoyancy permeates our thinking for the summer season. We look with fresh eyes at the issues that are fundamental going forward: things that matter to us and indeed the planet. We review what has gone before and turn our attention to what we want to see in the future: radical attitudes that embrace innovative technologies, forming the foundations of new solutions and bringing about a shift in aesthetics. Materials are used in inventive ways to energize, innovate and repurpose. The matter of waste and our withering natural resources are uppermost in our thoughts and these matters infiltrate all of our stories.

Concept and analysis: HILARY SCARLETT and LESLEY HURST
Photography: ROB ROWLAND
Yarn information: ORNELLA BIGNAMI, ELEMENTI MODA
Special thanks to: CECILE FEILCHENFELDT FOR ORIGINAL FABRIC CONCEPTS
WWW.CECILEFEILCHENFELDT.COM

Alessandra Praudi Bespoke Press Relations



1. IGEA - 100% CO 2. LANFICIO DELL'OLIVO - 100% PA 3. TOLLEGNO 1900 - 100% KF WV 4. COTONFICIO OLCESE FERRARI - 90% CO-10% LI 5. PNORI
 FILATI - WS-M E. MILLEFIU - VI-PA 7. FILPUCCI - 70% MAKÒ COTTON-30% RECYCLED POLYAMIDE FBRE 8. IGEA - 44% PL-38% CO-18% PA 9. ZIGNA
 BARUFFA - 100% WV 10. MARCHI & FELDI - 52% SCOTECB-48% POST CONSUMER PL 11. LORO PIANA - 53% WO-24% SE-23% LI 12. COTONFICIO OLCESE
 FERRARI - 18% LI-57% VI-25% PA 13. LANFICIO DELL'OLIVO - CO-PA 14. MARCHI & FELDI - 50% PC-20% VI-20% CO-10% WO 15. BOTTO GIUSEPPE - 100%
 SE+PA 16. FILTALY-LAB - 50% LI-50% CO 17. TOLLEGNO 1900 - 100% KF WV 18. PNORI FILATI - CO-PL 19. COTONFICIO OLCESE FERRARI - 75% VI-25% LI
 20. FABFIL - 90% CO-10% PL 21. PNORI FILATI - PL-PA 22. TOLLEGNO 1900 - 45% LI-35% XF WV 23. LANFICIO DELL'OLIVO - CO-PA 24. ZIGNA BARUFFA -
 55% CO-45% VI 25. E. MROGUO - 90% CO-10% PA+70% CO-30% PC 26. PNORI FILATI - CO-PL 27. IARL - 100% PA + 100% PERUVIAN PRIMA COTTON 28.
 FABFIL - 90% CO-10% PL 29. COTONFICIO OLCESE FERRARI - 100% VI

Alessandra Praudi Bespoke Press Relations

SENSORY Knits and shapes



Soft technology and clever engineered processes create organic curvaceous shapes and soft tailoring. Hosiery weight pieces are barely there and layer up one on the other. Worn with delicate ballerina skirts and elegant trouser shapes, often in crushed pleating or delicate tulle. There is an emphasis on gentle movement, following the body in some pieces whilst others envelop the form in softly structured shapes. Finishes are beautifully considered and discreet.

Alessandra Praudi Bespoke Press Relations

TEXTILE VIEW N° 124

WOMENSWEAR **KNITS AND YARNS** S/S 2020

179



1. FILPUCCI - 72% CO-25% PA + 88% VI-12% PET 2. **BOITTO GIUSEPPE - 100% WS** 3. MARCHI & REDI - 48% PC-20% VI-20% CO-10% WO-1% PA-1% EA
4. ZIGNA BARBARA - 100% CO 5. FILTRNY LAB - 100% SE 6. CARIAGGI LANFICIO - 100% WS 7. IGEA - 96% VI-4% PES 8. PINORI FLATI - VI-PES-CO-PA 9.
TOLLEGNO 1900 - 100% XF WV 10. PINORI FLATI - VI-PES 11. FILPUCCI - 88% CU-PRO-12% PET 12. LANFICIO DELL'OLIVO - VI-PES 13. CHAVAZZA - 64%
LI-36% VI 14. CARIAGGI LANFICIO - 70% WS-30% SE 15. TOLLEGNO 1900 - 70% ULTRAFINE MERINO WOOL 120'S-30% SE 16. RAPI FABIO - 75% CO-7%
WS-18% SE 17. CARIAGGI LANFICIO - 70% WS-30% SE 18. AMA - 57% SE-43% LI 19. VIMAR 1991 - 63% PL-MET-37% PA 20. LANFICIO DELL'OLIVO -
VI-PES 21. FILMAR - 100% EGYPTIAN COMPACT COTTON 22. TOLLEGNO 1900 - 65% LI-35% HF WV 23. FILMAR - 100% EGYPTIAN COMPACT COTTON
24. SE ME.VA. - 100% VI